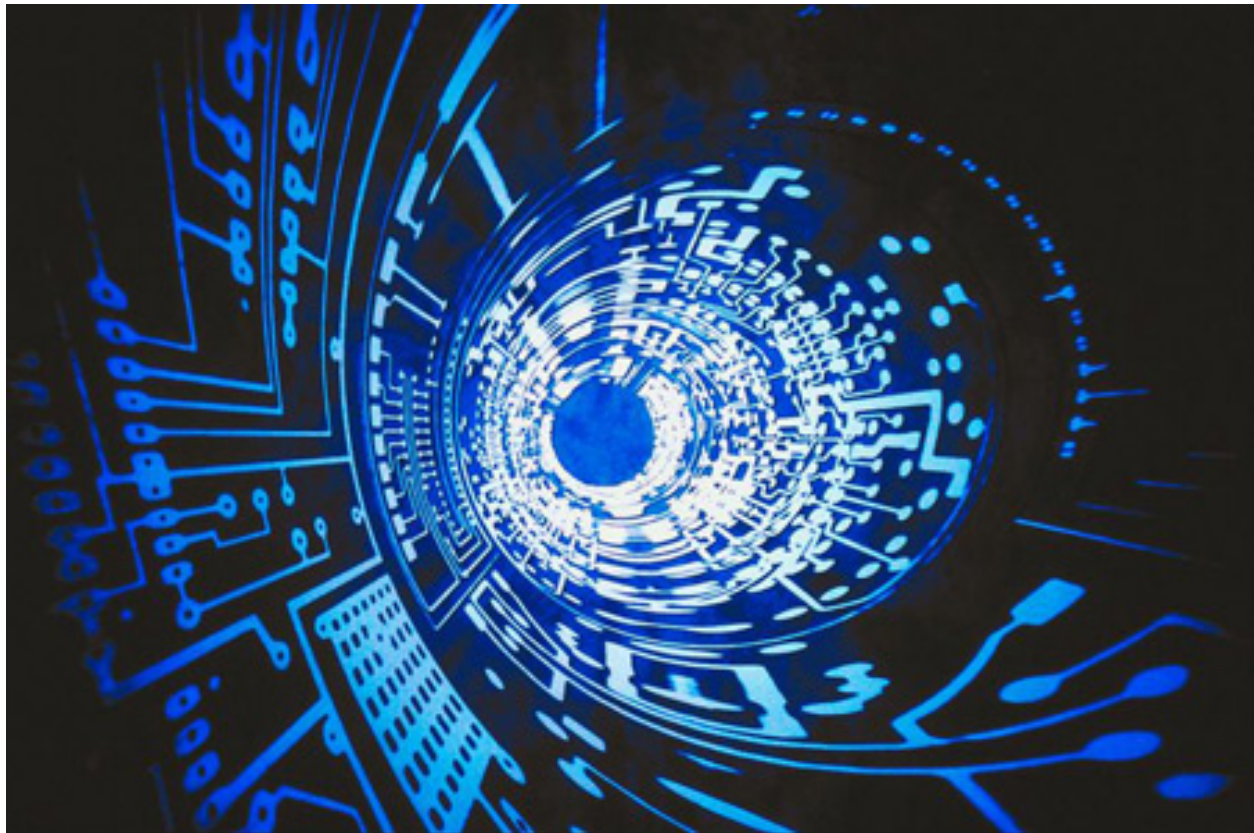


Computer and Network Maintenance Technology



[Explore Catalog Search Courses](#)

Entry-level students and computer professionals interested in working on and with computer networks will gain employable skills while studying under the Computer and Network Maintenance Technology Program.

Design, installation, repair, administration, management, and operation networks, emphasizing flexibility to adapt to network technology to the needs of any company, facility, or educational institution is the primary focus of the program.

This program is designed to prepare students with the concepts and skills required for entry-level employment into computer support and maintenance careers. Completion prepares the student with CISCO routing skills.

What Will I Learn?

The program provides students with hands-on training in computer hardware and software to meet the growing demand for the professionals who can modify, repair and upgrade personal computers, computer peripherals, and local area networks (LAN).

What Can I Do with This Course of Study?

- Computer Maintenance Technician
- Help Desk Support Technician

- PC Maintenance and Repair Supervisor
- PC installation Technician
- Desktop Technician
- Laptop Repair Technician
- IT Support Technician
- Sales Associate
- Device Repair Technician
- Field Service Technician
- Cable, and Telecommunication Installation Technician

Computer and Network Maintenance Technology Pathway

Foundations: These are the courses students need in order to progress in their career/college pathway, as they either provide a certificate or lay the groundwork for moving to the next set of courses.

Course	Course Title	Counts Toward Certificate
BCIS 1305	Business Computer Applications	MT1, NET1
CPMT 1411	Introduction to Computer Maintenance	MT1, NET1
ITCC 1414	Introduction to Networks	MT1, NET1
TECM 1349	Technical Math Application	MT1, NET1
CPMT 2449	Advanced Computer Networking Technology	MT1, NET1
ITSC 1416	Linux Installation and Configuration	MT1, NET1
ITSY 1442	Information Technology Security	MT1, NET1

Knowledge Building: These courses further the students' knowledge in the area of study and increase their preparation for the degree completion.

Course	Course Title	Counts Toward Certificate
ITCC 1408	Introduction to Voice over Internet Protocol (VoIP)	MT1, NET1
IMED 1316	Web Design 1	NET1
ITNW 1425	Fundamentals of Network Technology	NET1
ITNW 2412	Routers	NET1
ITNW 2453	Advanced Routing and Switching	NET1
ITMT 1457	Administering a Windows Operating System This course completes the NET1 certificate	NET1

and meets the capstone requirement for the degree.

ITSE 1402

Computer Programming

Completion: These are the courses the student needs in order to complete the degree plan and prepare to enter the workforce.

Course	Course Title	Counts Toward Certificate
ITDF 1300	Introduction to Digital Forensics	
MATH 1314	College Algebra	
ENGL 2311	Technical Writing	
SPCH 1311	Introduction to Speech Communication	
GOVT 2305	Federal Government	
ENGLISH 1301	English Composition 1	
CPMT 2488 Or ITMT 1457	Internship: Computer Installation and Repair Technology Administering a Windows Operating System	
	Students who have completed ITMT 1457 do not need to take CPMT 2488 for the degree.	

[CAREERS
IN THIS FIELD
My Next Move](#)

▪ [Live Chat](#)

Contact Info.

Charles Ganze
TV1, Room 110
281.425.6246
cganze@lee.edu

Santiago Guardiola
TV1, Room 108
281.425.6467
sguardiola@lee.edu